

**PARCELA 5**  
VIVIENDA nº 9 y 13

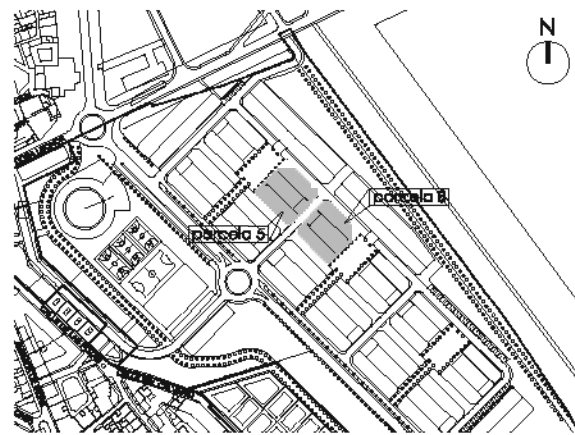
superficie util: 203,50 m<sup>2</sup>.

sup. Incluida  
100% zaguán, terrazas y balcones: 240,25 m<sup>2</sup>.

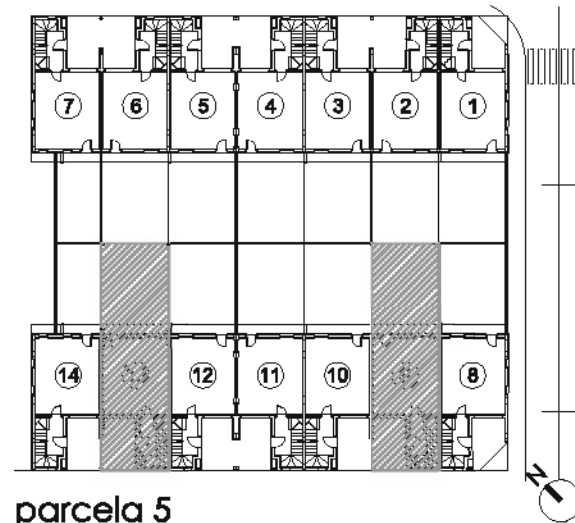
superficie total parcela: 118,80 m<sup>2</sup>.



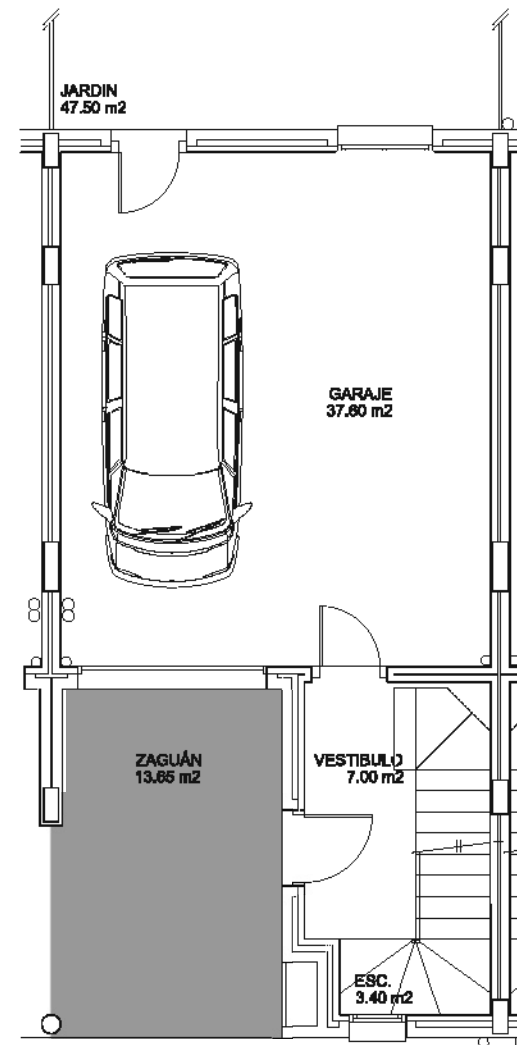
alzado principal



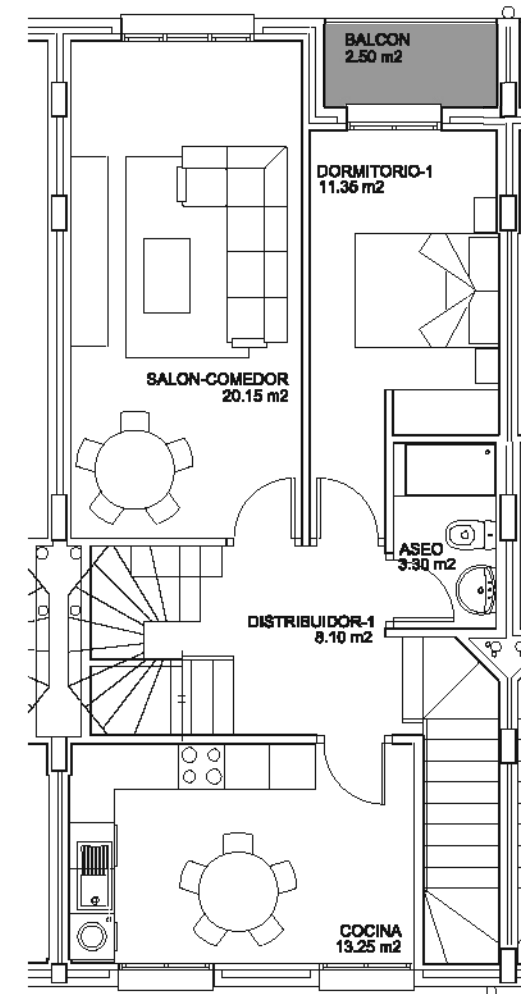
situación



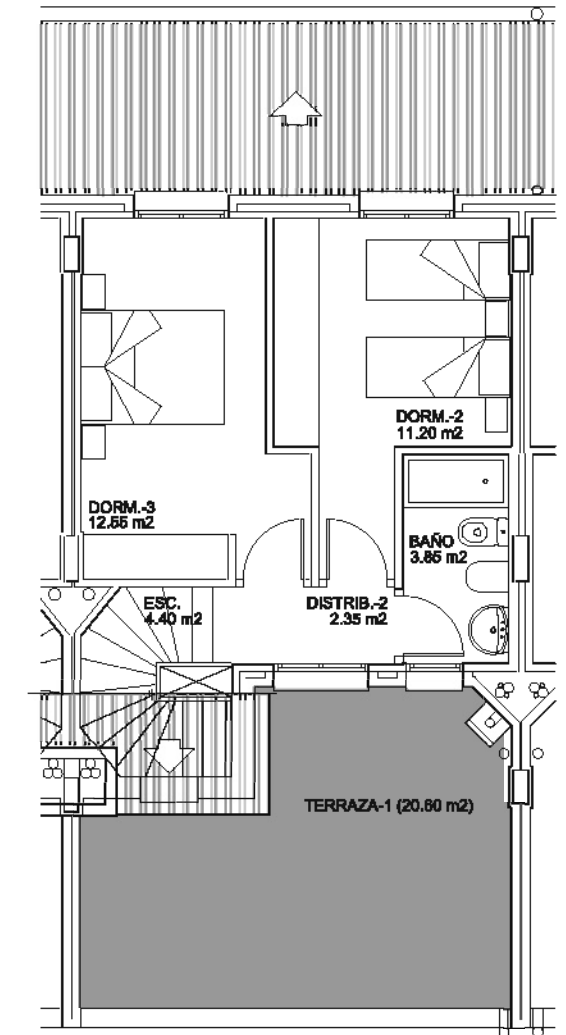
parcela 5



planta baja



planta primera



planta segunda