

**PARCELA 5**

VIVIENDA nº 8

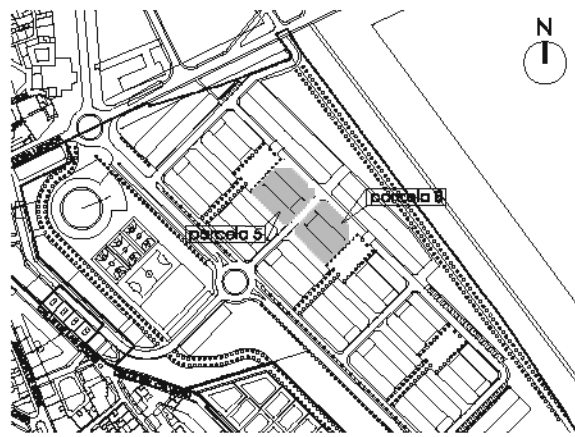
superficie util: 198,10 m<sup>2</sup>.

sup. Incluida  
100% zaguán, terrazas y balcones: 229,55 m<sup>2</sup>.

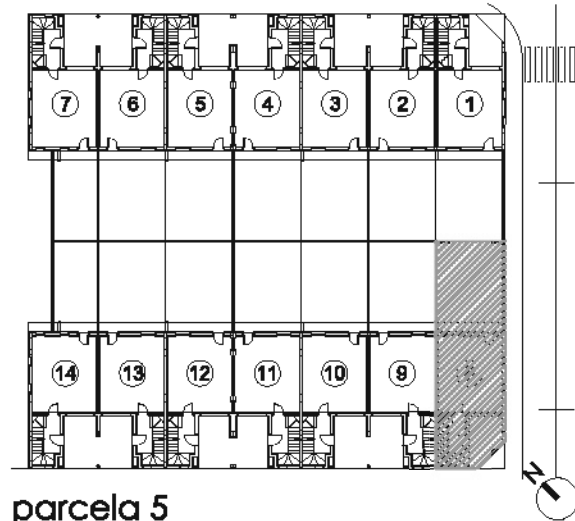
superficie total parcela: 119,17 m<sup>2</sup>.



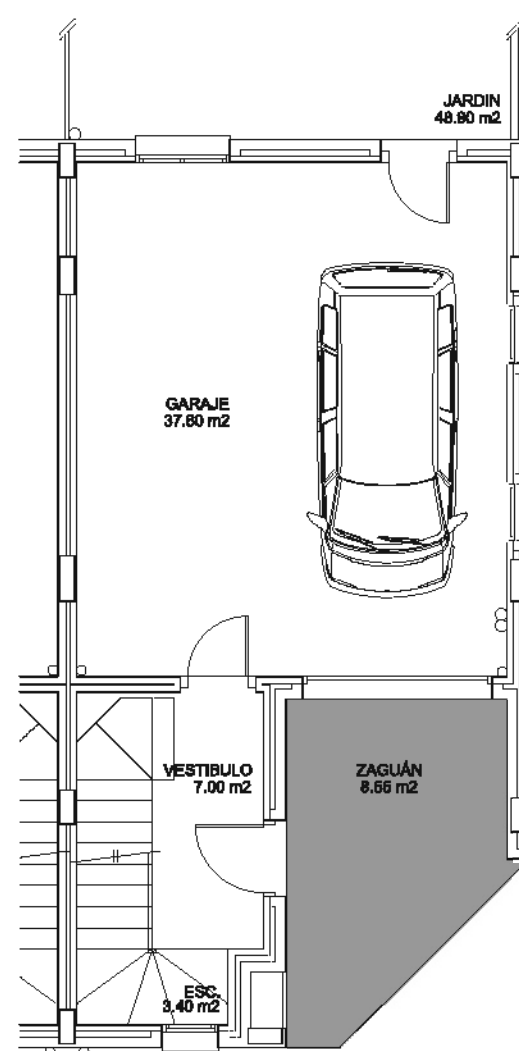
alzado principal



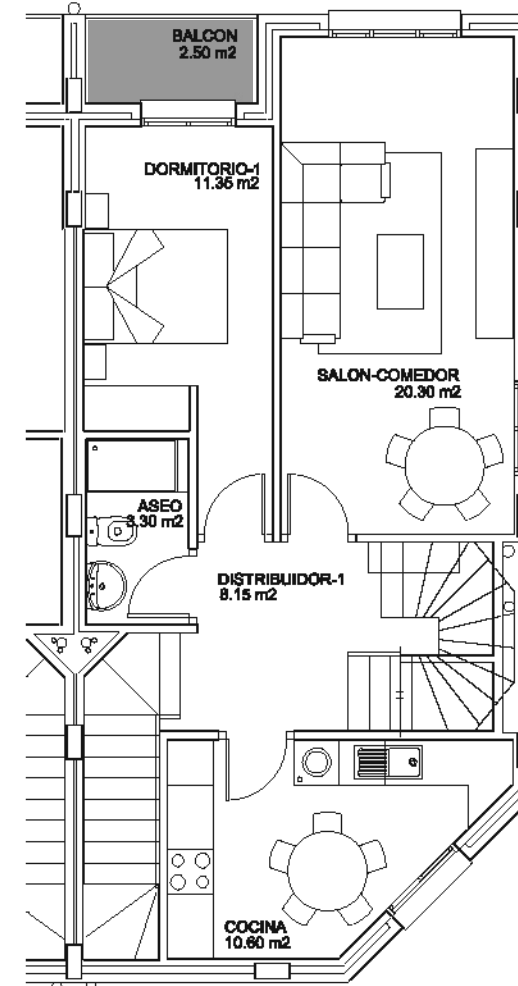
situación



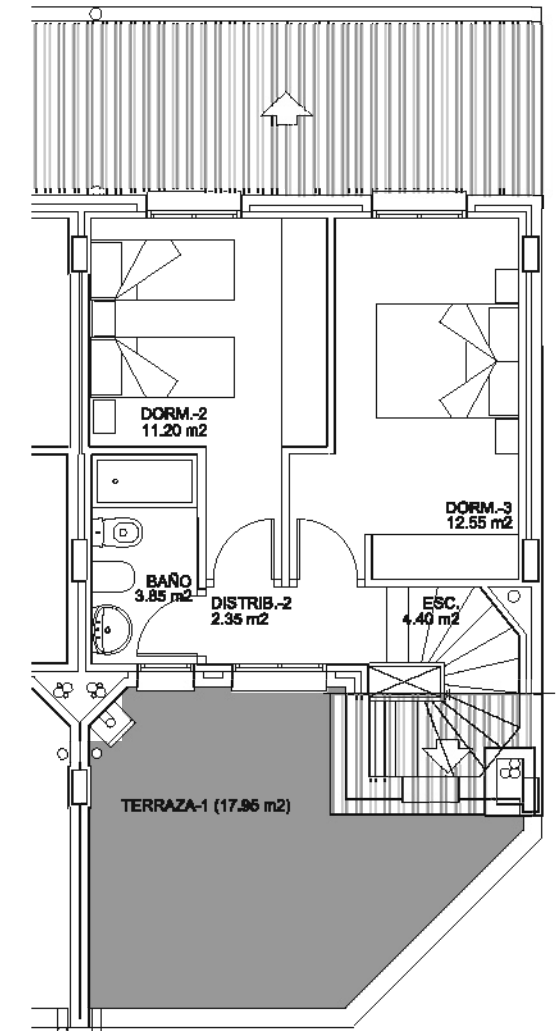
parcela 5



planta baja



planta primera



planta segunda