

**PARCELA 5**

VIVIENDA nº 7

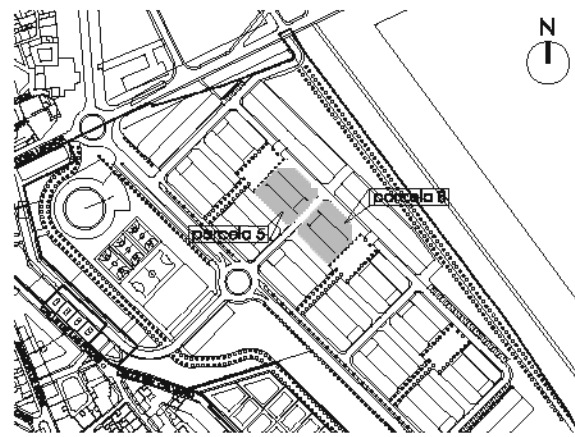
superficie util: 203,45 m<sup>2</sup>.

sup. Incluida  
100% zaguán, terrazas y balcones: 240,65 m<sup>2</sup>.

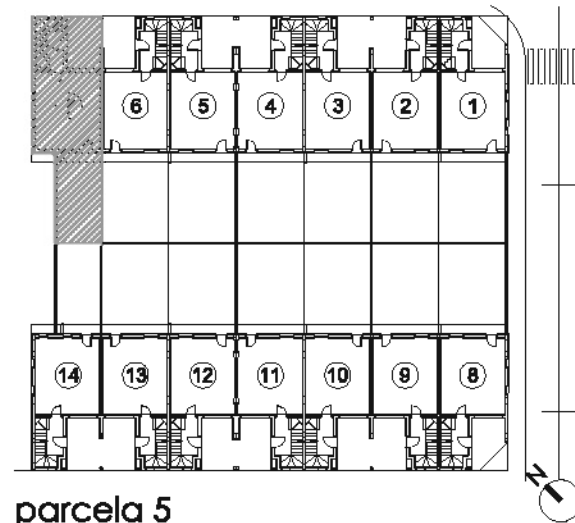
superficie total parcela: 106,30 m<sup>2</sup>.



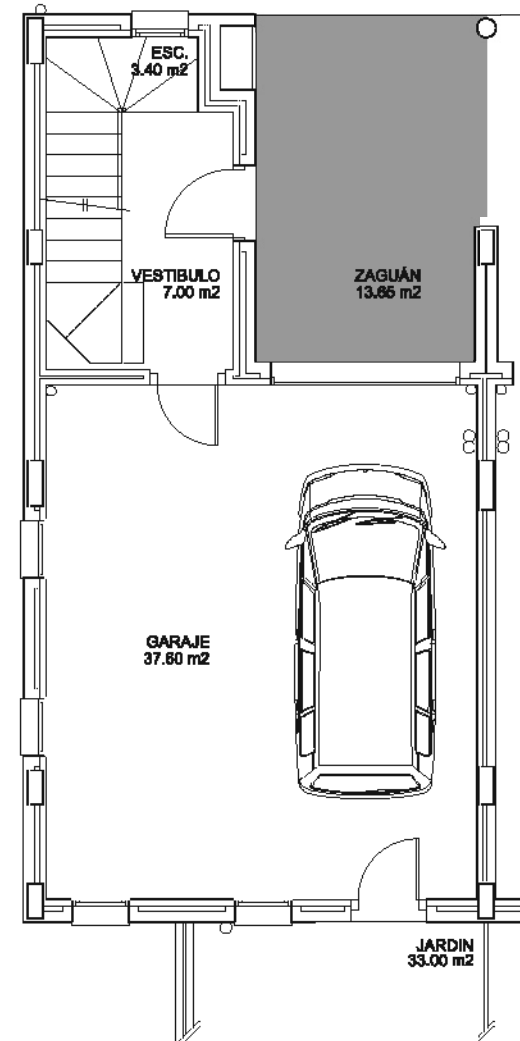
alzado principal



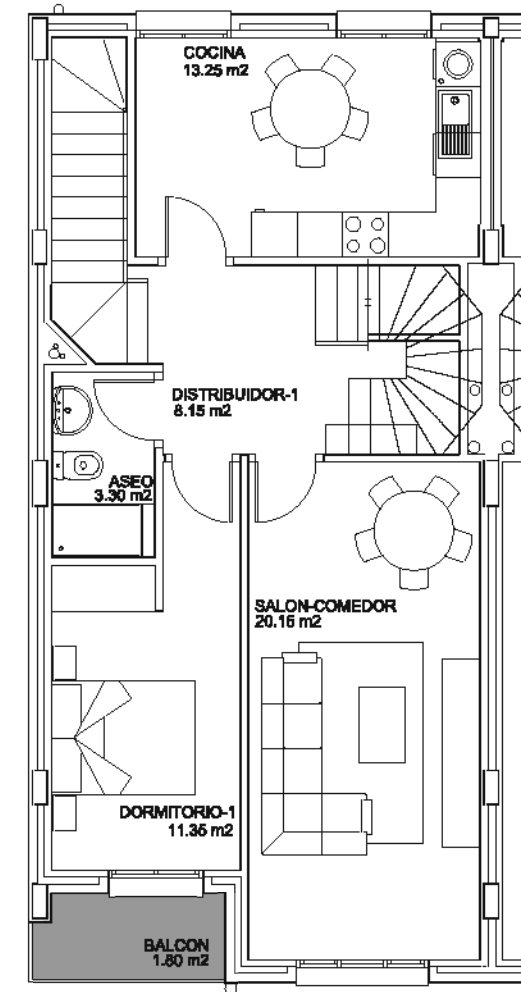
situación



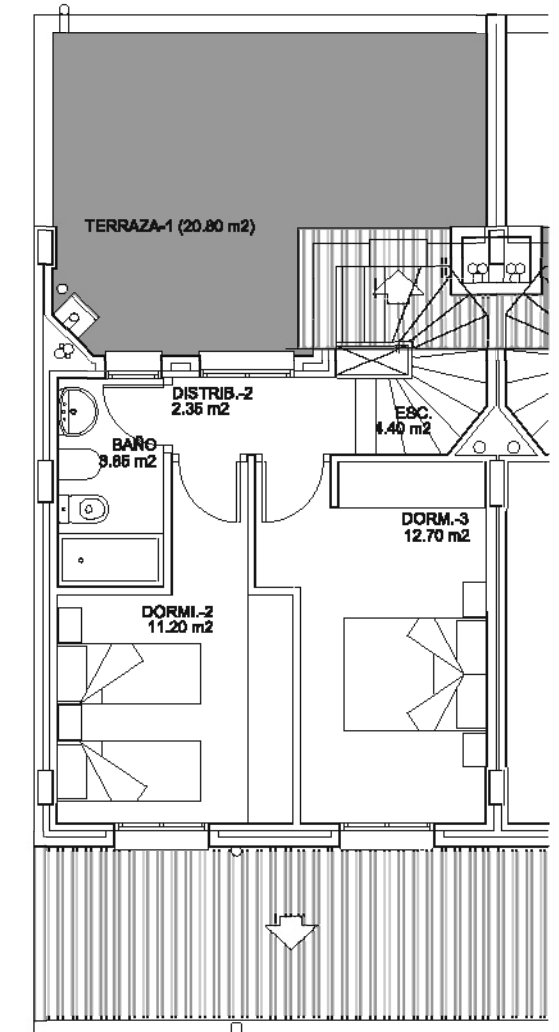
parcela 5



planta baja



planta primera



planta segunda